



Eton Rise NW3

Parkheath
Sold on Service





Eton Rise, NW3 Asking Price £550,000 Leasehold

- A spacious and bright one bedroom apartment
- Fantastic roof top views across London
- Top floor- 571 sq ft approx
- Porterage, lift and communal gardens
- Good decorative order
- Popular 1930`s purpose built block
- 18ft reception
- 15ft bedroom with built in wardrobes
- First come first served parking
- Ideal for Chalk Farm station, Primrose Hill and Belsize Park



Parkheath
Sold on Service

Camden Tax band C

Belsize Park/Hampstead
208 Haverstock Hill
NW3 2AG
Sales 020 7431 1234
Lettings 020 7431 3104
nw3@parkheath.com

South/West Hampstead
192 West End Lane
NW6 1SG
Sales & Lettings
Tel 020 7794 7111
192@parkheath.com

Kensal Rise
54-56 Chamberlayne Rd
NW10 3JH
Tel 020 8960 4845
kensal@parkheath.com

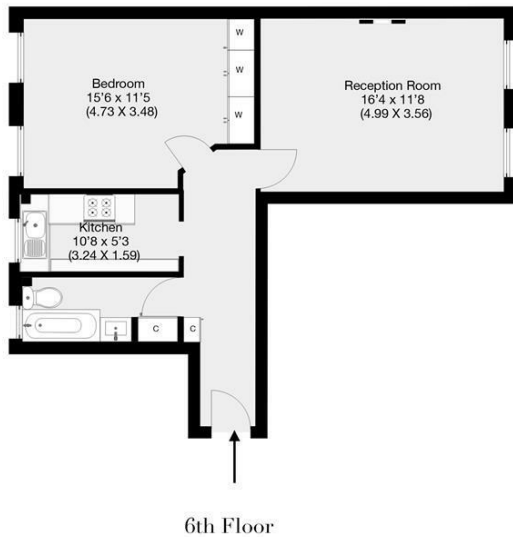
Property Management
192 West End Lane
NW6 1SG
020 7433 6174
pm@parkheath.com

www.parkheath.com



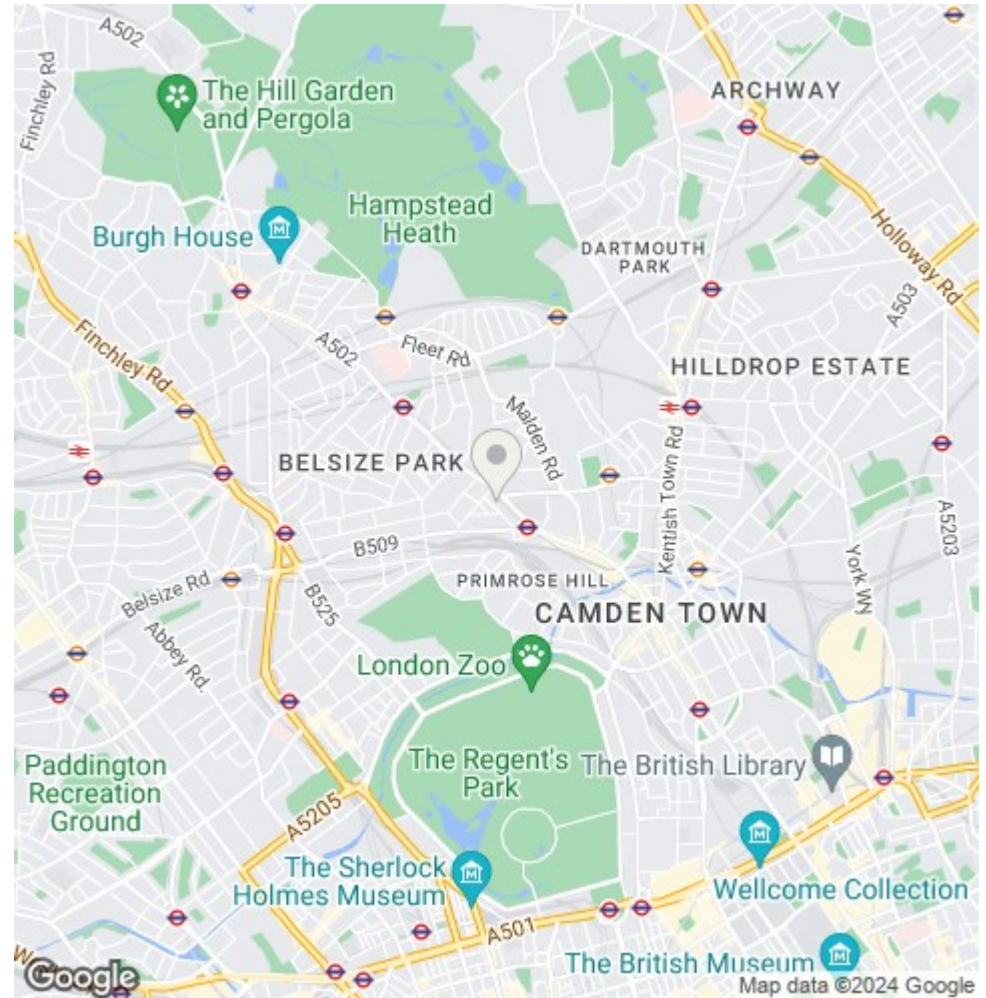
Eton Rise, Eton Collage Road, London, NW3

Approximate Gross Internal Area 53 sqm / 571 sqft



THIS FLOOR PLAN IS PRODUCED FOR PARKHEATH SUBMITTED BY ARCHIMEDIA web: www.archi-media.co.uk

Whilst every attempt has been made to ensure the accuracy of the floor plan contained here, measurements of doors, windows and rooms are approximate and no responsibility is taken for any error, omission or misstatement. These plans are for representation purposes only and should be used as such by any prospective buyer or lease. Specifically no guarantee is given on the gross internal floor area of the property if quoted on this plan and any figures given is initial guidance only and should be treated as such.



The particulars do not constitute part of an offer or contract. The particulars, including text, photographs and plans, are for the guidance only of prospective purchasers/tenants and must not be relied upon as statements of fact. The descriptions provided therein represent the opinion of the author and whilst given in good faith should not be construed as statements of fact. Nothing in these particulars shall be deemed a statement that the property is in good condition or otherwise or that any services or facilities are in good working order. All measurements are approximate